

Airborne Precautions

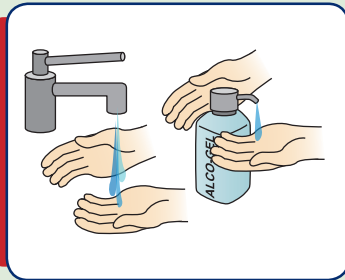
for isolated patient



Visitors:

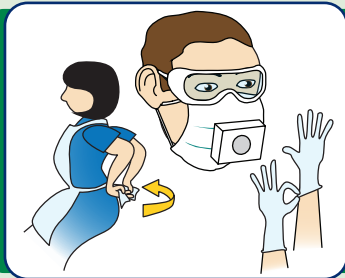
Report to nurse in charge before entering this room.

Staff members:



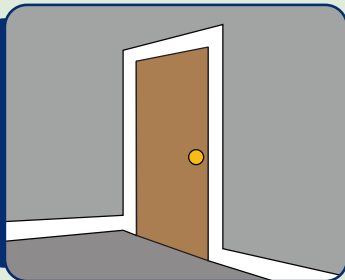
Hands

Decontaminate hands before entering this room.



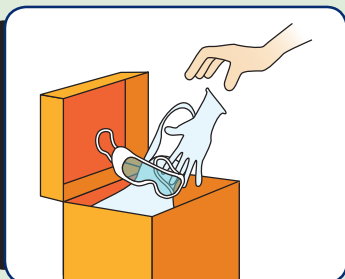
Personal Protective Equipment

Put on FFP3 respirator and eye/ facial protection before entering this room. An apron should be worn for direct care delivery and contact with the patient's care environment (gown if extensive splash/spray anticipated or if AGP performed). Gloves are only required if exposure to blood and/or body fluids is anticipated



Door

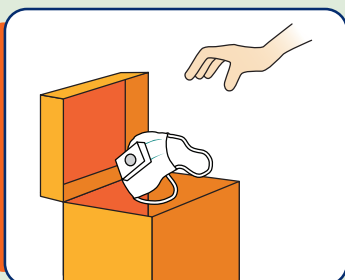
Keep door closed.



Before leaving

Decontaminate equipment prior to removal from room.

Discard gloves, apron/gown and eye/ facial protection in healthcare waste bin. Decontaminate hands.



After leaving

Remove respirator and discard in healthcare waste bin.

Decontaminate hands.